

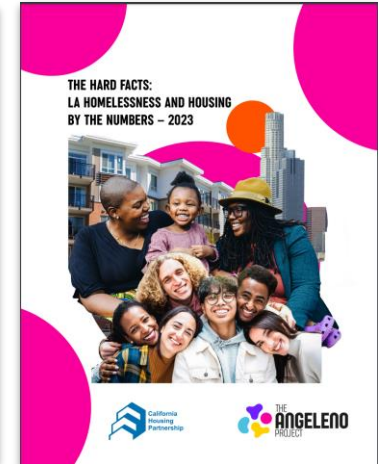
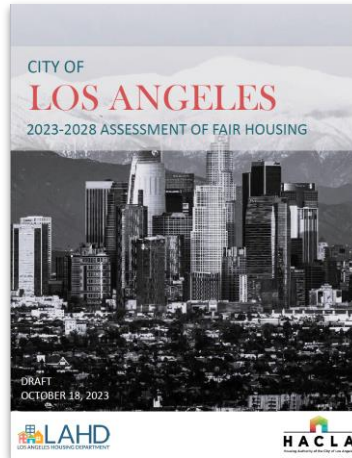
2023 Needs Assessment

ULA COC Meeting
March 14, 2024

Los Angeles Housing Department (LAHD)
Joel Montano
Nancy Twum-Akwaboah

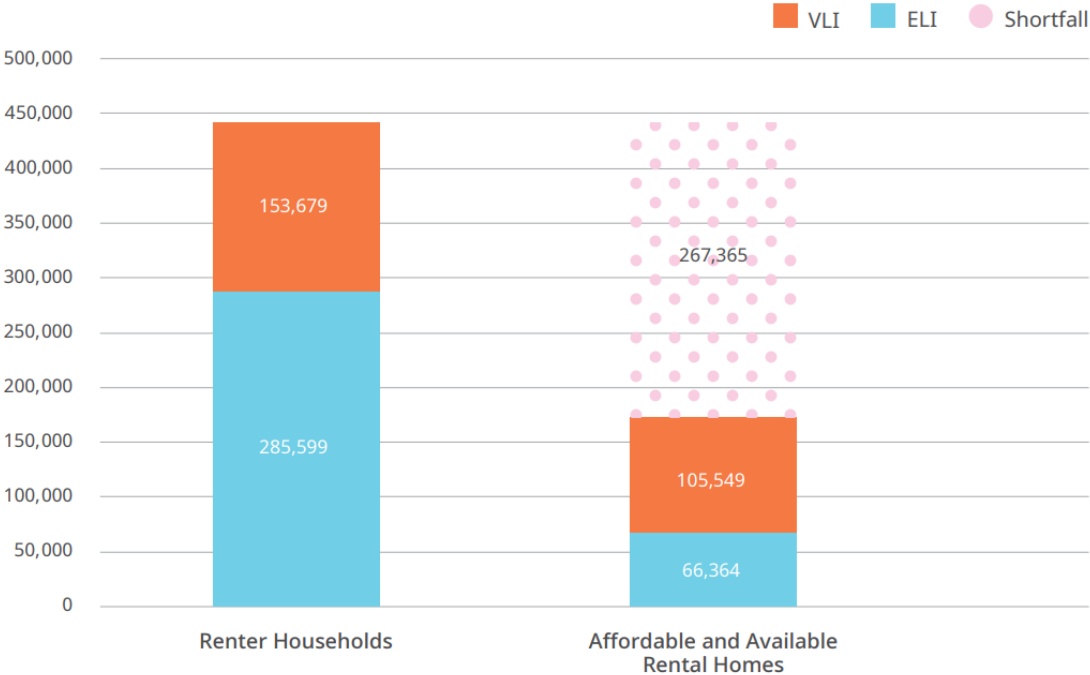
Existing Data and Needs Assessments

- [Draft Assessment of Fair Housing Plan](#)
- [The Hard Facts: LA Homelessness and Housing by the Numbers - 2023](#)
- [Los Angeles 2021-2029 Housing Element](#)
- Housing Element [Annual Progress Reports](#)
- Data Dashboards:
 - [LAHD Eviction Notices Filed Dashboard](#)
 - [2023 Homeless Count Data Dashboard](#)
 - [LA City Planning - Housing Dashboard](#)



Shortfall of Affordable Housing Units

CITY OF LOS ANGELES IS SHORT 267,365 AFFORDABLE RENTAL HOMES



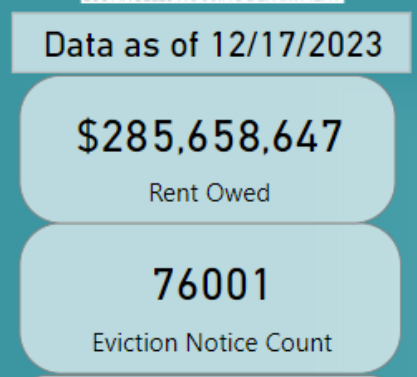
Source: California Housing Partnership analysis of 2021 1-year ACS PUMS data with HUD income levels. Methodology adapted from NLIHC gap methodology.

RHNA Progress - Permitted Units by Affordability

Income Level	RHNA Allocation by Income Level	2021*	2022	Total Units to Date (6th Cycle)	Total Remaining RHNA by Income Level
Very Low	115,978	1,547	2,150	3,697	112,281
Low	68,743	615	1,024	1,657	67,086
Moderate	75,091	39	88	127	74,964
Above Moderate	196,831	7,797	20,142	27,939	168,892
Total RHNA	456,643				
Total Units		9,998	23,422	33,420	423,223

*including projection period from 6/30/2021 - 10/14/2021 and planning period from 10/2021 to the end of the year

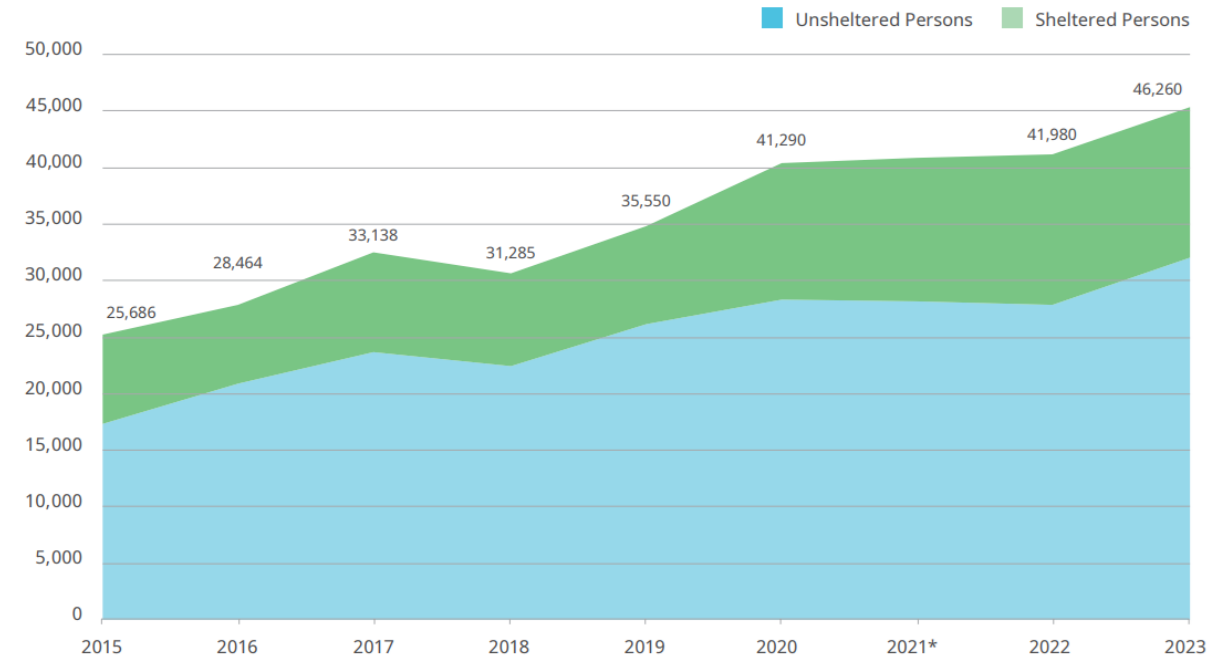
Eviction Warning Notices Filed, Rent Debt, and Primary Reasons for Filing



Source: LAHD Eviction Notice Dashboard

Increasing Number of People Experiencing Homelessness

THERE WAS AN 80% INCREASE IN THE NUMBER OF PERSONS EXPERIENCING HOMELESSNESS FROM 2015 TO 2023



*PIT Count Data for 2021 is not provided in the chart, because data collection was not carried out by most municipalities during the COVID pandemic in 2021.

Source: LAHSA 2015-2023 Greater Los Angeles Homeless Count - City of Los Angeles.

Populations Impacted by Homelessness

BIPOC INDIVIDUALS ARE DISPROPORTIONATELY AFFECTED BY HOMELESSNESS AND PEOPLE EXPERIENCING HOMELESSNESS SUFFER HIGH LEVELS OF VIOLENCE

Homelessness Point in Time Count for City of Los Angeles (2023)

Number of Individuals Experiencing Homelessness	Number of Unsheltered Persons	Number of Sheltered Persons
46,260	32,680	13,580

Race & Ethnicity of Individuals Experiencing Homelessness in the City of Los Angeles

American Indian/ Alaska Native	Asian	Black/African American	Hispanic/Latino	Native Hawaiian/ Other Pacific Islander	White	Multiple Races
475	896	15,485	18,871	323	8,842	1,368

Select Demographics of Individuals Experiencing Homelessness in the City of Los Angeles

Substance Use Disorder	Serious Mental Illness	Developmental Disability	Physical Disability	HIV/AIDS	Domestic/Intimate Partner Violence
12,567	11,396	4,288	8,775	940	16,686

Source: LAHSA 2023 Greater Los Angeles Homeless Count – City of Los Angeles.

What are the Data Gaps?

- Various L.A. City plans/reports do not disaggregate data by income categories, geographic areas, and within proximity to transit.
- Veterans data is available at the national level, but not provided at the City level.
- Housing needs data is not disaggregated by all categories, for example sexual orientation lacks disaggregation.
- Housing needs for immigrant and undocumented populations may not be adequately captured.

Thank You!